

Laminata

Ready. Set. Build.

Shed 2700

Installation Guide



Ready.
Set.
Build.

Find out more.
www.laminata.nz

Ask us.
0508 526 462

Laminata has created garden sheds focused on practical and functional design. Our MiniCLT panels make up the majority of the shed, ensuring strength and durability. The TPO rubber membrane roofing keeps the water out and the aluminum profiles cover the joins, making for a shed you'll be proud to have in your backyard!

Toolkit.

To get started you'll need a few tools (not included).



Spirit level.



Measuring tape.

Mallet hammer.



Pre-drill bit (3mm).



Drill.



Cartridge gun.

Getting started.

Materials list for Shed2700.

Timber.

Floor. Bearers and CLT panels.

100 x 50 x 1710mm (external bearers)	2x
100 x 50 x 1680mm (centre bearers)	2x
275 x 30 x 1790mm (1 with no tongue)	6x
275 x 30 x 835mm (1 with no tongue)	6x

Rear Wall. CLT Panels.

135 x 30 x 1790mm (tongue on)	1x
135 x 30 x 893mm (tongue on)	1x
275 x 30 x 1790mm (1 with no tongue)	7x
275 x 30 x 893 (1 with no tongue)	7x

Side Walls. CLT Panels.

275 x 30 x 1650mm	14x
135-275 x 30 x 1650mm (angle panels)	2x

Front Wall. CLT Panels.

275 x 30 x 733mm (2 with no tongue)	16x
275 x 30 x 1190mm (no tongue)	1x

Roof. CLT Panels.

275 x 30 x 1790mm (1 @ 205mm wide)	10x
135 x 30 x 1790mm (no tongue)	2x
135 x 30 x 893mm (no tongue)	1x

Roof. TPO Rubber Roofing.	1x
---------------------------	----

Laminata

Other.

Doors. Premade doors.

588 x 1925mm	2x
--------------	----

Roof. Equal Angle.

40 x 40 x 1345mm	4x
------------------	----

40 x 40 x 1935mm	2x
------------------	----

Corners. Equal Angle Channel.

40 x 40 x 2200mm (front corners)	2x
----------------------------------	----

40 x 40 x 2100mm (rear corners)	2x
---------------------------------	----

Door Jams/Frames. Equal Angle Channel.

31.75 x 31.75 x 2200mm	2x
------------------------	----

31.75 x 31.75 x 270mm	2x
-----------------------	----

Internal profiles. Equal Angle Channel.

40 x 40 x 1313mm	4x
------------------	----

Flat bar. Flat bar aluminium.

50 x 3mm x 2100mm	2x
-------------------	----

Hardware.

8g x 65mm Screw (Square head)	300x
-------------------------------	------

8g x 30mm Self-Tapping (Phillips)	200x
-----------------------------------	------

8g x 40mm Self-Tapping (Phillips)	50x
-----------------------------------	-----

Door Hinge	6x
------------	----

Pad Bolt	2x
----------	----

Silicon Cartridge	1x
-------------------	----

Ready. Set. Build.

Note.

It pays to itemise all components prior to assembly.

Step 01.

Getting started.

Prepare your work space.

Itemise components and ensure level ground to assemble your base on.



Lay out bearers.

2x 100 × 50 × 1710mm bearers used for left and right.

2x 100 × 50 × 1680mm bearers used for the middle bearers.



Laminata

Note.

30mm bearer overhang on rear/
front left and right bearers, front
middle to sit flush.

Step 02.

Laying floor.

First.

Using **7x planks 275 x 30 x 1790mm** (1 with no tongue) and **7x planks 275 x 30 x 893mm** (1 with no tongue) brick pattern the floor and fix each plank with **1x screw 8g x 65mm**. (Planks with no tongue go at the front).



Note.

The bottom 1/2 plank has no groove and the top rear wall panels have no tongue.

Construct Step 3 and 4 in conjunction.

Step 03.

Build up the rear wall.



Continuing the staggered pattern, build up the rear wall in conjunction with Step 4 using;

1x CLT panels 135 x 30 x 1790mm (Tongue on) and **1x CLT panels 135 x 30 x 893mm (Tongue on)**.

Fix the bottom layer of rear and side walls to the base with **8g x 65mm screws at 400mm centres**.



7x CLT panels 275 x 30 x 1790mm (1 with NO tongue)

7x CLT panels 275 x 30 x 893mm (1 with NO tongue).

Construct one layer at a time applying silicon along the side of tongues.



Laminata

Note.

Ensure walls are square and straight as you build up.
Silicon between each layer.

Step 04.

Building up the side walls

In conjunction with step 3 stack up **14x CLT panels 275 x 30 x 1650mm.**

Fix **2x screws 8g x 65mm** from the rear wall panels into the sidewall panels



On the top layer install the **2x CLT panels with no tongue.**

Along with the **2x 135 - 275 x 30 x 1650mm angled planks.**



Step 05.

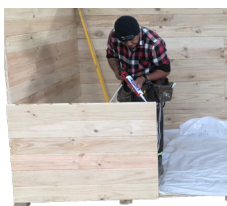
Installing front wing walls.

Note.

Silicon between each layer. 2 CLT planks with no tongue are at the top.

First.

Using **16x CLT panels 275 x 30 x 1185mm (2 with no tongue)**, screw fix from the bottom up with **2x screws 8g x 65mm** in each plank. The first layer should also be screwed into the floor.



Laminata

Note.

Pre-drill aluminium placing screws 300mm apart.

Step 06.

Installing internal aluminium.

Fix **2x equal angle aluminium 40 x 40 x 1313mm** to the inside top of both front and rear walls. For easy installation pre-drill 3mm holes at 300mm centers both top and bottom of aluminium. Fix using **8g x 30mm screws**.



Next.

Aluminum should run over door way ready for **275 x 30 x 1190mm** lintel to be installed.



Note.

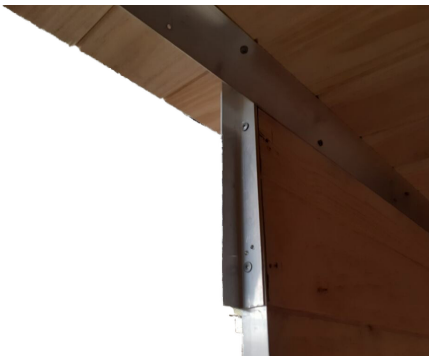
Ensure shed is square and level.

Step 07.

Door jams and front lintel.

Install **2x 31.75 x 31.75 x 3mm x 2.2m** door jams screw fixing the inner side with **8g x 30mm screws** starting from the second board down from the top and fixing to every second CLT plank.

Add on the **2x 31.75 x 31.75 x 3mm x 0.270m** which receives the **275 x 30 x 1190mm plank**.



Note.

Ensure shed is square as roof is fixed down.

Step 08.

Constructing the roof.

Using **1x 135 x 30 x 1790mm** and **1 x 135 x 30 x 893mm CLT planks** with **NO tongue** screw fix these down to the rear wall with **8g x 65mm screws**, place planks 30mm inside aluminium. Once attached, use **10 x 275 x 30 x 1790mm CLT planks (1 @ 205mm wide)** to complete the roof. Fix down to front wall with **8g x 65mm screw** and up through rear wall aluminium with **8g x 30mm screws**.



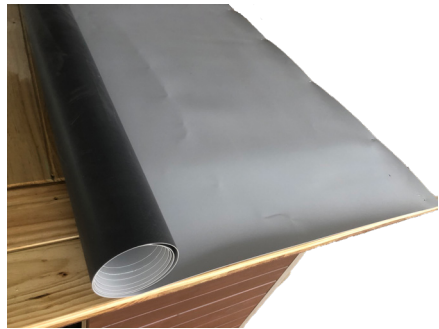
Note.

You can also glue down the rubber membrane (optional).

Step 09.

Roofing membrane and staining.

Using the **TPO membrane roofing**. Roll out and staple down so it sits square on the roof. This is a good time to paint or stain your shed.



We recommend coating with a **Cabots water based stain**.



Note.

Fix 3 50 x 3mm
2100mm flat bars
on the exterior rear
wall joins.

Step 10.

Attaching aluminum profiles.

2x front and back 40 x 40 x 1.6mm x 1.345m

2x Roof sides 40 x 40 x 1.6mm x 1.935m

2x front corners 40 x 40 x 1.6mm x 2.2m

2x rear corners 40 x 40 x 1.6mm x 2.1m

Fix all aluminium using 8g x 30mm screws every second plank. Roof aluminium only needs to be fixed from the top.

Laminata

Ready. Set. Build.

Find out more.
www.laminata.nz

Ask us.
0508 526 462



Please recycle
this guide.